



Three2One Manual

CONTENTS

1. INTRODUCTION
2. KEY FEATURES
3. IN USE
4. GIGRIG CUSTOM DESIGNED PRE-AMP
5. OPTO-KICK FOOTSWITCH
6. THREE2ONE IN USE
7. THREE2ONE MODES
8. WARRANTY

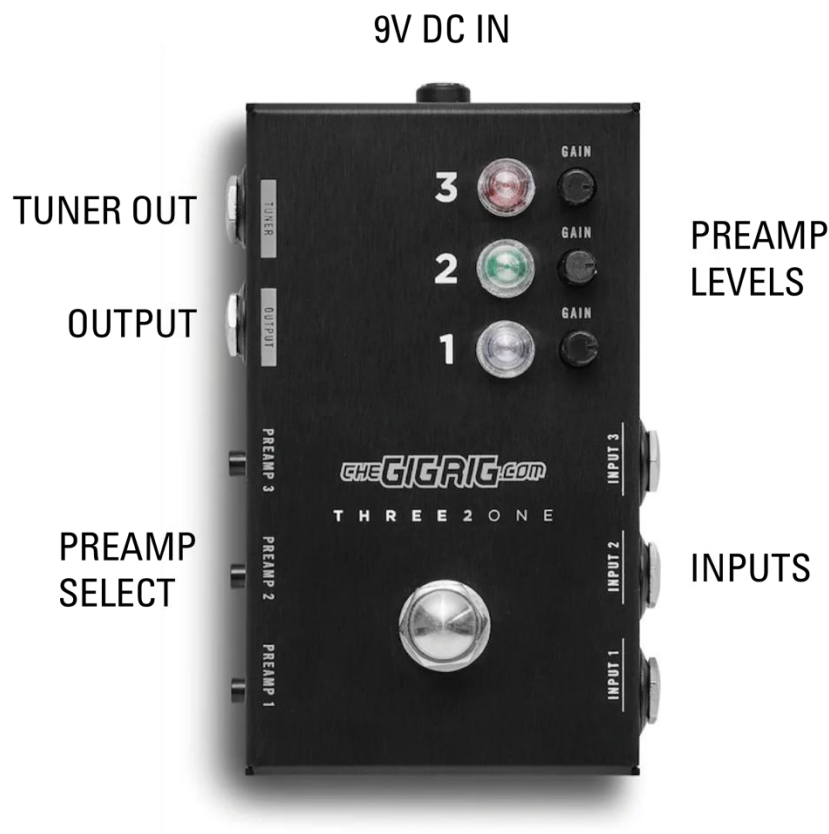
1. INTRODUCTION

TheGigRig Three2One is a high-quality instrument input selector that allows you to connect up to three instruments and switch between them effortlessly. A built-in high-headroom preamp lets you balance the input levels of each instrument, making it ideal when switching between guitars or basses with different output levels.

A dedicated tuner output is automatically engaged whenever the footswitch is pressed, allowing silent tuning during instrument changes.

The Three2One can also be used with a single instrument cable, enabling you to cycle through three different preset gain levels without the need for multiple leads.

Whether you're managing multiple instruments on stage or simply want consistent levels every time you plug in, TheGigRig Three2One ensures everything is perfectly balanced and ready to play.



2. KEY FEATURES

- GigRig designed marine grade stainless steel Optokick footswitches.
- Custom designed switchable pre-amps with cut & boost control to accommodate different pickups & active guitars.
- Preamps are buffered to facilitate long cable runs or true bypass.
- Single cable or multi cable made
- Silent tuning with tuner mute

3. IN USE

The GigRig Three2One guitar selector features three inputs. You can now switch easily between 1-3 guitars or even line level inputs such as a keyboards or drum machines!

After plugging your instruments in simply use the footswitch to cycle through them. Need more inputs?

If you need to balance levels between differing instruments, then simply select the adjacent preamp button. This engages the pre-amp gain controls next to the LED displays. You can then easily cut or boost the individual inputs.

4. GIGRIG CUSTOM DESIGNED PRE-AMP

It's awesome! We've doubled the voltage internally from 9v to 18v, so the Three2One has massive input headroom and can easily cope with a huge range of differing guitar pickup types (including active pickups), but remains ultra clean and quiet.

However, without the preamp selected, the guitar is true bypass; your guitar signal passes straight through. With the preamp selected (button pressed in) you can use the corresponding gain control to set your guitar's level, cut/ boost or simply set it to unity gain that will also give you a buffer, which helps keep your signal clean and strong over long cable runs.

5. OPTO-KICK FOOTSWITCH

The Three2One uses TheGigRig designed Optokick footswitch. It's milled from incredibly tough marine quality stainless steel. The Optokick footswitch uses light instead of potentially un-reliable mechanical switching.

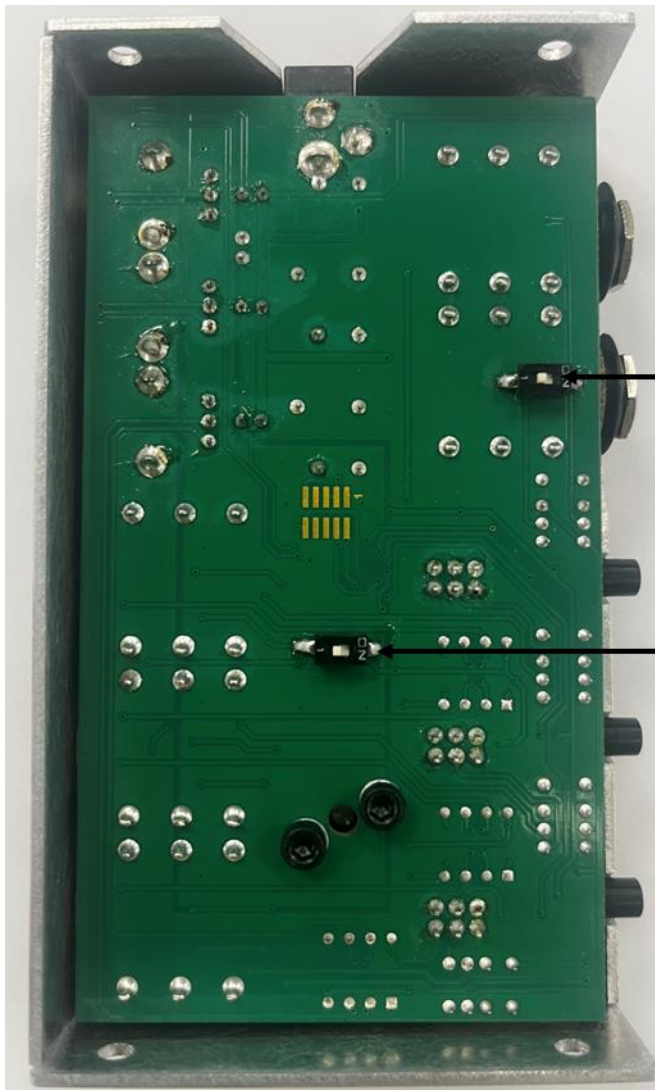
We firmly believe it's the most reliable footswitch in the world!

6. THREE2ONE IN USE

Using inputs one and two first; the Three2One will ignore the third input and will only switch between the two guitars in inputs in use. (Blue and Green). When input three is also used, then Three2One will then automatically sense a third input being connected and will cycle through all 3 inputs.

7. THREE2ONE MODES

TheGigRig Three2One gives you 3 different options for switching. **Default**, **Single Input** and **Constant Tuner**. These modes can be accessed by using the dip switches on the underside of the PCB. To access these DIP switches you'll need to undo the top and bottom screws and loosen the OUTPUT and TUNER OUT jacks.



Default Setting

All units are shipped in default setting - both DIP switches are in the 'ON' position

In the standard mode the Three2One will switch between the 3 separate inputs

MODE DIP SWITCHES

Single Input Mode

The top switch should be in the 'on' position, the bottom switch should be in the 'off' position

Constant Tuner – the top switch should be in the 'off' position and the bottom switch must be in the 'on' position. In this mode the tuner out is always active.

WARRANTY

The GigRig warrants this product to be free from defects in material and workmanship for **12 months** (or legal standard for country of delivery) from the date of original purchase. If the product fails within the warranty period, The GigRig will repair or replace it at our discretion and cover return shipping. This warranty applies when used as recommended. It does not cover:

- Loss, theft, misuse, abuse
- Unauthorized modification or improper storage
- Lightning or natural disasters

Damage from the above may incur a non-warranty repair fee. This warranty is not transferable to a new owner should you sell the pedal.

Legal:

In the event of malfunction, the purchaser's sole remedy is repair or replacement. The GigRig is not liable for:

- Lost profits or savings
- Damage to other equipment
- Incidental or consequential damages

The GigRig's liability will not exceed the original purchase price. All warranties other than those expressly stated are disclaimed.

Disposal:

No batteries or lead inside. Return to TheGigRig Ltd or follow local electrical disposal regulations.
Do not dispose of in household waste.

Copyright & Legal

- TheGigRig is protected by copyright, patent, and design registration.
- 'GigRig' is a registered trademark (No. 2343300).
- Unauthorized copying of design or functionality for commercial gain may lead to legal action.
- Licenses may be granted to non-competing companies.

Compliance:

- RoHS Compliant
- Compliant with EN 60950
- Power supply approved for USA and EU regulations (see separate instructions)

Manufacturer:

The GigRig Ltd, Unit 15 Whitehill Industrial Pk, Royal Wootton Bassett, SN4 7DB

Authorised Representative:

EAS – Mustamäe tee 50, 10621 Tallinn, Estonia

Warnings: For indoor use only. Keep away from water and children

